

# CARCO WISE

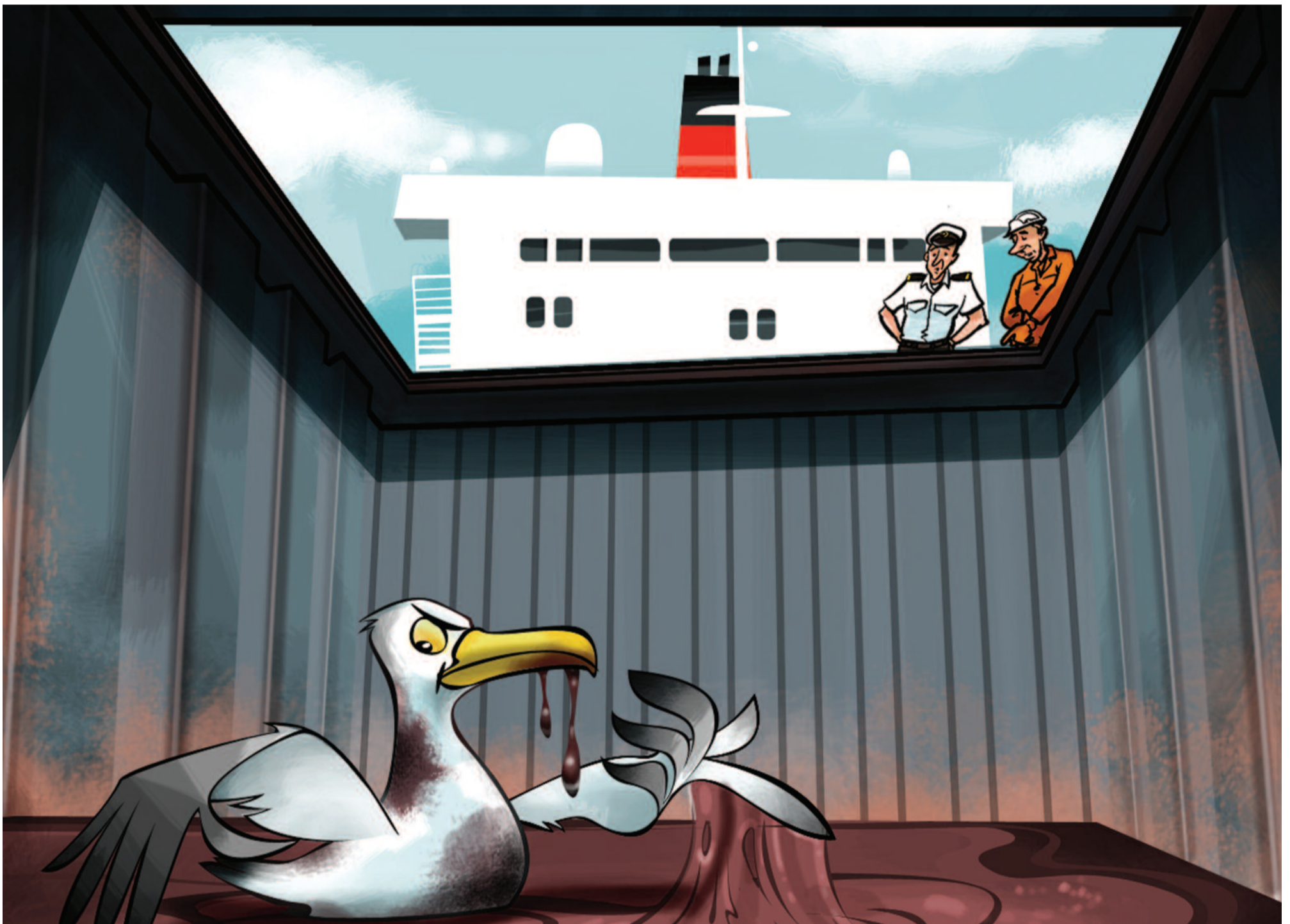
*Poster 1:*

LOSS PREVENTION POSTER SERIES  
FOR NORTH OF ENGLAND MEMBERS

**NORTH**  
SERVICE, STRENGTH, QUALITY



## LIQUEFACTION



**Cargo Wise** is North of England's loss prevention initiative to promote awareness of common problems associated with different cargoes.

**Cargo Wise** Any bulk cargo with a proportion of fine particles and sufficient moisture may liquefy.

**Cargo Wise** Liquefied bulk cargo can shift and/or create a free surface effect, reducing a vessel's stability. Dangerous situations can quickly develop which in the worst cases may result in your vessel capsizing.

**Cargo Wise** The International Maritime Solid Bulk Cargoes Code (IMSBC) designates cargoes that may liquefy as Group A – but be aware that not all cargoes that may liquefy are listed in the Code. The IMSBC Code contains guidance for seafarers on the loading of bulk cargoes that may liquefy. The requirements of Sections 7, 8 and the individual schedules for Group A cargoes should be strictly observed.

**Cargo Wise** Do not load cargo until a shipper's declaration along with relevant supporting documentation is received onboard, carefully checked and found to be in order.

**Cargo Wise** When loading cargo that may liquefy the operations should be closely observed by ship's staff from start to finish to help ensure that the cargo being loaded is safe for carriage. Look out for cargo splattering as it lands in the hold – any cargo that splatters is potentially unsafe.

**Cargo Wise** Can tests should be carried out throughout loading. The procedure for carrying out a can test is described at Section 8.4 of the IMSBC Code.

**Cargo Wise** If there is any doubt over the suitability of the cargo for carriage do not start loading, or, if it has already started, stop loading. Seek further advice from owners or their P&I Club.